

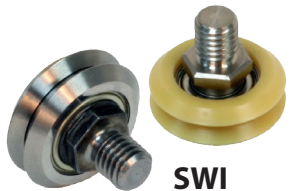
DUALVEE® Guide Wheels to *FIT ANY APPLICATION*

Original Wheels



W

Integral Wheels

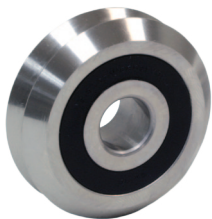


SWI



BWI

Washdown Wheels



WDW



Wheel (Series)	Wheel Material	Seal/ Shield	Retainer	Temp Range (Fahrenheit)	Temp Range (Celsius)	Available Sizes	Application Examples
W SWI BWI	52100 Steel	Shield	Nylon 6,6	-31° to +248°	-35° to +120°	0 - 4 0 - 4 2 - 4	Any application without extreme temperature or corrosion-resistance requirements; woodworking, machine tool, printing, packaging, paper, textile, automotive, material handling, general automation
W_X SWI_X BWI_X		Seal		-22° to +212°	-30° to +100°	0 - 4XL 0 - 4 2 - 4	
SWI_P	Polymer (Overmold), 440C	Shield	300 Stainless Steel	-4° to +248°	-20° to +120°	0 - 2	Applications with lighter load corrosion-resistance requirements
W_SSX	440C Stainless Steel	Seal & Shield	Nylon 6,6	-22° to +212°	-30° to +100°	1 - 4XXL	Any application without extreme temperature requirements, but where corrosion resistance is required; medical, laboratory, food and beverage
WDW (Washdown)		Double Seal	Nylon 6,6	-22° to +212°	-30° to +100°	2 - 3	Washdown environments such as food processing and packaging
W_SS227 (High Temperature)		Shield	304 Stainless Steel	-22° to +500°	-30° to +260°	0 - 4	High temperature applications; baking, welding, plasma cutters
W_SS300 (Low Temperature)	Shield	304 Stainless Steel	304 Stainless Steel	-94° to +230°	-70° to +110°	1 - 4	Low temperature applications; aerospace, refrigeration, or any sub-zero climate applications

Wheels can be supplied usually within three weeks with any customer supplied or specified lubricant.