

UtiliTrak® Linear Guide



Sleek, Compact Design

Lowest Installed Cost in its Class

Easy Installation

High Reliability

The UtiliTrak® linear guide is designed for applications where low cost, easy installation, and minimal maintenance are primary design objectives. Based on proven DualVee Motion Technology®, UtiliTrak provides smooth, low friction motion in a sleek, compact design.

UtiliTrak linear guides are available in **SW Series** steel guide wheels running on an induction hardened bearing steel channel for larger loads and smooth operation, **PW Series** polymer guide wheels running on an anodized aluminum channel, which provides an economical and corrosion resistant choice for lighter duty applications, and **CR Series** composite stainless steel for higher loads requiring corrosion resistance.

UtiliTrak is ideal for running two systems in parallel. Its design does not require precise parallelism for accurate operation. The vee side serves as the motion guide, while the roller side compensates for parallel misalignment.*

* Roller side not available in CR Series



Bridge Connection

- Custom sizes and hole patterns to specification
- C-channel steel or MCS aluminum framing construction with T-slots

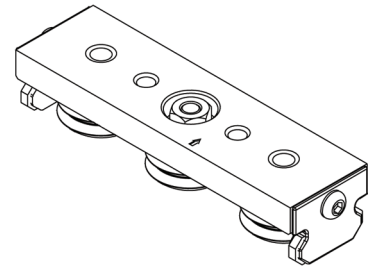
888.580.8272 925.439.8272 www.bwc.com

©Bishop-Wisecarver Corporation 2007. All rights reserved.

BISHOPWISECARVER®

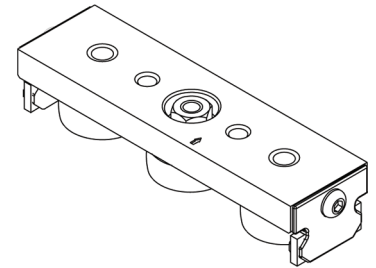
Vee Guide Carriage Plate Loads

Size	PW Series Carriage		SW Series Carriage						
	3-wheel Only		3-wheel		4-wheel		5-wheel		
	Radial N	Axial N	Radial N	Axial N	Radial N	Axial N	Radial N	Axial N	
0	55	88							
1	110	155	2440	719	2440	862	2900	1014	
2	165	311	5300	1475	5300	1770	6300	2080	
3			11800	5100	11800	6122	14040	7140	



Crown Roller Carriage Plate Loads

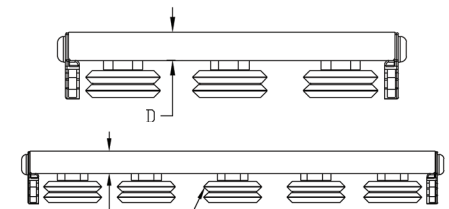
Size	PW Series Carriage		SW Series Carriage					
	3-wheel Only		3-wheel		4-wheel		5-wheel	
	Radial N	Axial N	Radial N	Axial N	Radial N	Axial N	Radial N	Axial N
0	55	0						
1	110	0	2440	0	2440	0	2900	0
2	165	0	5300	0	5300	0	6300	0
3			11800	0	11800	0	14040	0



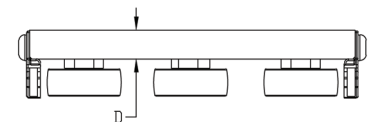
Carriage Assembly Details

Wheel Size	# Wheels	A	B	C Vee	C Crown (min-max)	D	E Socket Size	F	G
0	3	79.9	18	22	22-23.1	7.9	8	22	M4 x 0.7
1	3	113.5	24	26.3	25.3-27.6	8.8	10	40	M6 x 1
1	4 or 5	166.5	24	26.3	25.3-27.6	8.8	10	35	M6 x 1
2	3	144.2	38	35	34.7-37.4	11.8	13	45	M8 x 1.25
2	4 or 5	224.2	38	35	34.7-37.4	11.8	13	45	M8 x 1.25
3	3	201.3	55	50	46.9-53.4	15.8	15	60	M10 x 1.5
3	4 or 5	317.3	55	50	46.9-53.4	15.8	15	60	M10 x 1.5

*1 This wheel omitted on 4-wheel assemblies

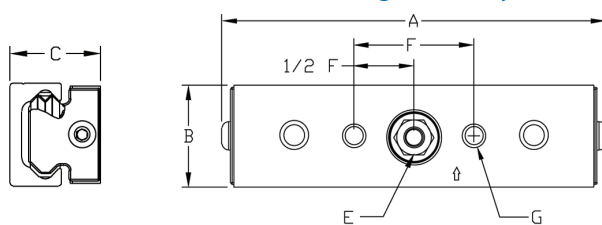


Vee Guide Carriage Assemblies

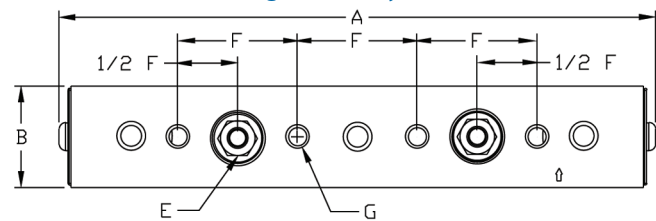


Crown Roller Carriage Assembly

3-Wheel Carriage Assembly



4 or 5-Wheel Carriage Assembly

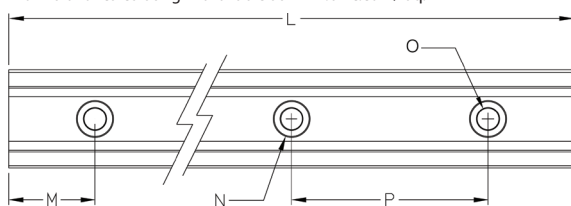


Channel Dimensions

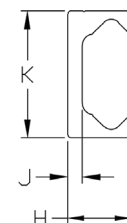
Size	H	J	K	L max	M	N (dia x depth)	O	P
0	11	4	20	3600	See Catalog for Calculating End Spacing	8.3 x 3	4.8	80
1	15	4	26	3600		9.8 x 2.8	5.8	80
2	19.7	4.5	40	3600		14.3 x 3	8.8	80
3	30	8	58	3600		14.3 x 5	8.8	80

*Formula for calculating M available at www.bwc.com/faq.

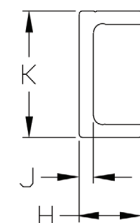
All dimensions in mm



Stainless steel composite UtiliTrak not shown



Vee Channel



Open Channel