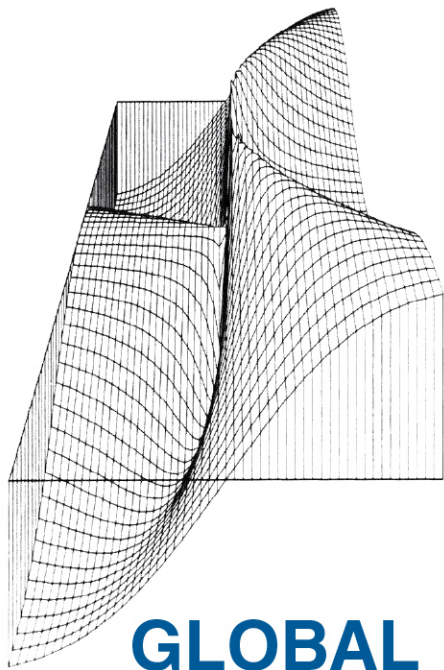


CAREER PREPARATION

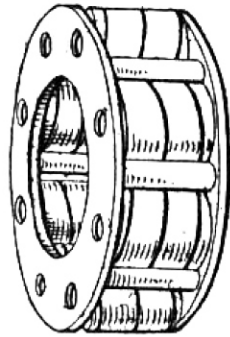
DID YOU KNOW THAT **FIRST®** PARTICIPATION
CAN SHOW YOU THE POSSIBILITIES OF
AN ENGAGING CAREER IN

SCIENCE, TECHNOLOGY, ENGINEERING, MATH, AND BEYOND?



GLOBAL TECHNOLOGY

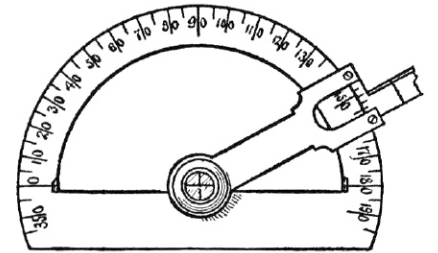
- network architecture
- application development
- software engineer/architect
- web development
- information security specialist
- database administration
- computer and information systems management
- computer systems analysis
- computer support
- computer programming



ENGINEERING

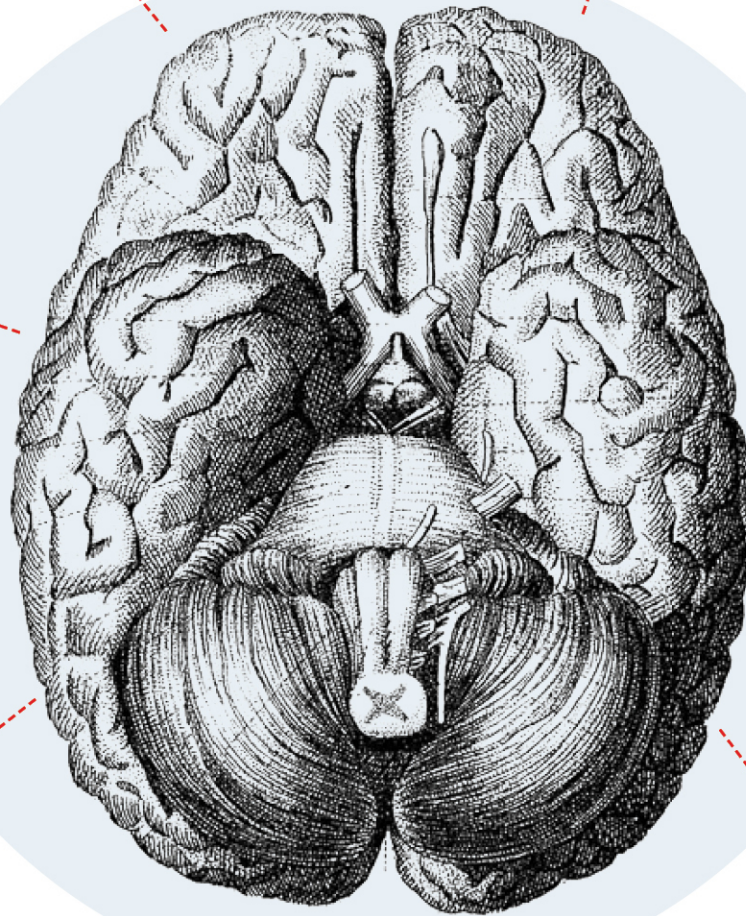
- | | | |
|--|---|--|
| electrical
communications
computer
electromechanical systems
electronic systems
software | geotechnical
gas
geological
geomatics
metallurgical
mineral
mining
oil
petroleum | engineering management
industrial
integrated/unified
production
systems |
| mechanical
aerospace
automotive
biomedical
mechanical
naval | civil
building
construction | chemical
agricultural
biological
environmental
food
forestry
materials
plastics
water |

leadership



MATH

- | | |
|------------------------|-----------------------|
| algebra | statistics |
| geometry | game theory |
| trigonometry | functional analysis |
| calculus | algebraic geometry |
| linear algebra | differential geometry |
| combinatorics | dynamical systems |
| differential equations | numerical analysis |
| real analysis | set theory |
| complex analysis | category theory |
| abstract algebra | model theory |
| topology | logic |
| number theory | probability |



*gracious
professionalism*

CREATIVE OUTREACH

- public relations
- marketing
- photography
- graphic design
- creative direction
- project management



SCIENCE

- | | |
|--------------|--------------|
| paleontology | physics |
| medicine | botany |
| pathology | chemistry |
| linguistics | mineralogy |
| ichthyology | biology |
| forestry | astronomy |
| entomology | geology |
| seismology | microbiology |

